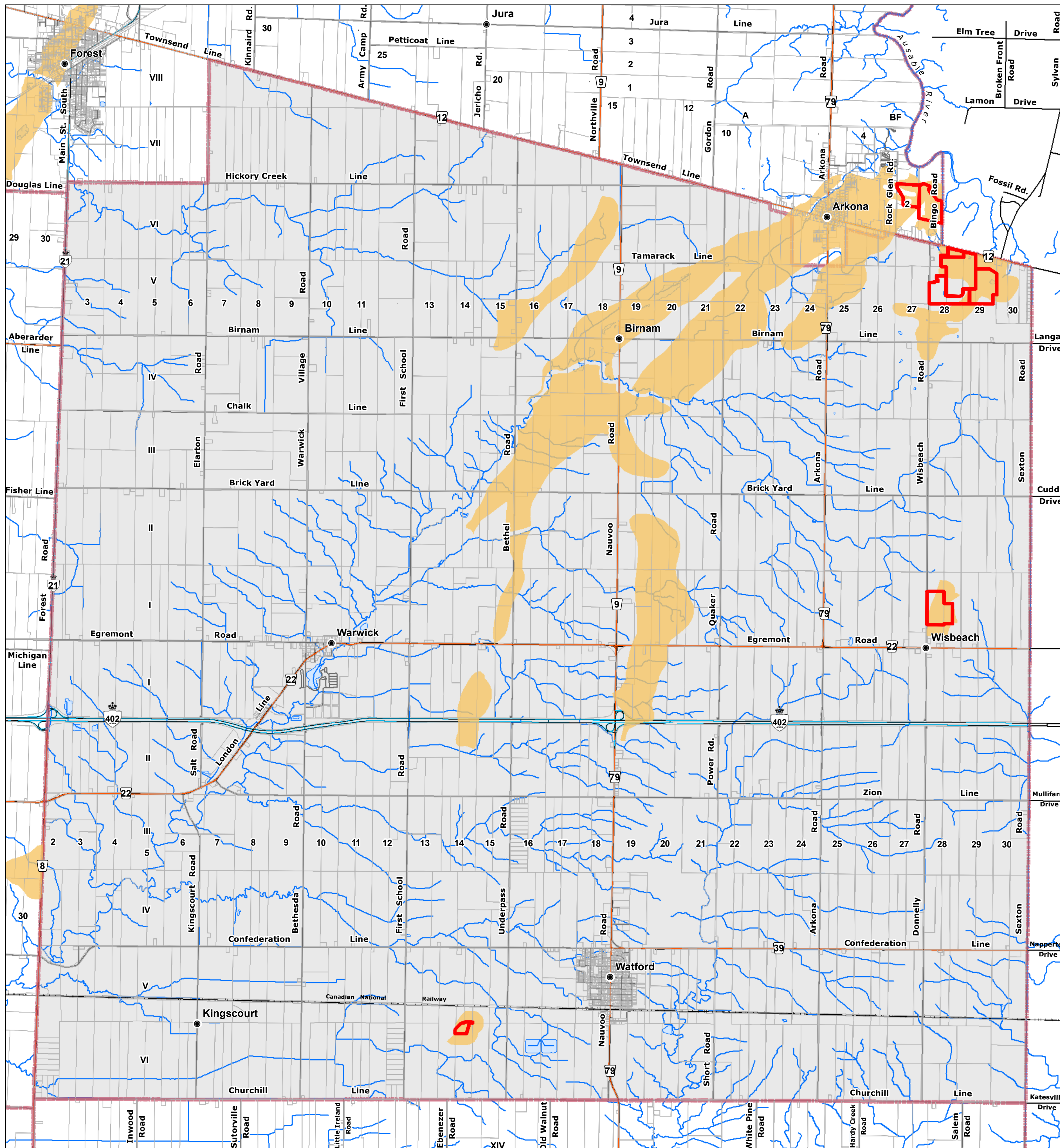


# Township of Warwick

## OFFICIAL PLAN

### APPENDIX 2

#### Mineral Aggregate Resources



#### LEGEND

- Assessment Parcels
- Rivers - Streams - Drainage
- Roads
- County Road
- Provincial Highway
- Railroad
- Waterbodies
- Township Boundary

#### Thematic Legend

- Aggregate Site (Authorized Active - MNR)
- Potential Aggregate Deposit - As Extracted from Lambton County "Official Plan" - Appendix Map "B" - Mineral Aggregate Resources

Data is drawn from the Ontario Geological Survey 2010, [MRD128-REV][Surficial Geology of Southern Ontario] and represents potential locations of mineral aggregate resources in Lambton County. Lambton County has never been appraised by the Ontario Ministry of Northern Development and Mines (MNDM) to formally assess these aggregate resources for potential as mineral deposits of sufficient quantity and quality based on specific geological evidence to warrant present or future extraction.

Aggregate Sites (Authorized Active) February 2016 (MNR)

#### Reference

Disclaimer: These digital mapping products have been produced on the County of Lambton's Geographic Information System. Data provided herein is derived from sources with varying levels of accuracy and currency. This is not a survey product. The County of Lambton disclaims all responsibility for the accuracy or completeness of information contained herein. The County of Lambton assumes no responsibility for errors arising from use of these digital mapping products.

**NOTE: This Appendix does not form part of this Plan and is provided for information purposes only.**

Cadastral database is current to December 2020.

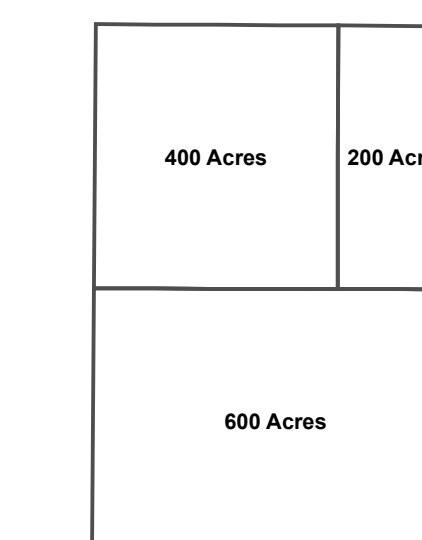
Projection: UTM NAD 83 Zone 17

Consultant: NPG Planning Solutions, July 2021

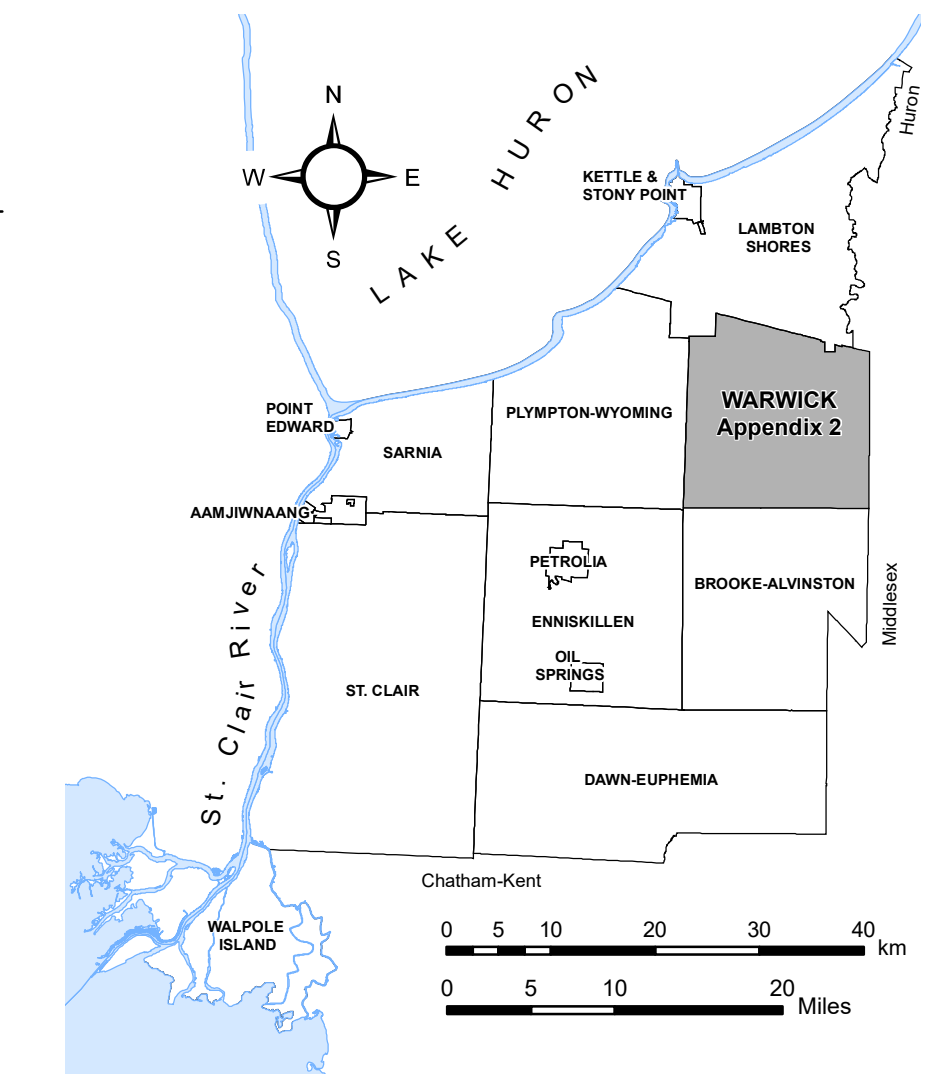
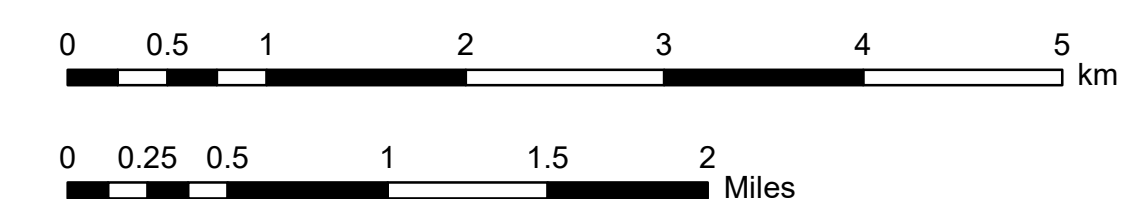
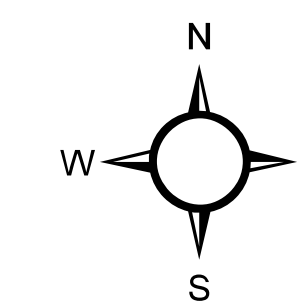
COUNTY OF LAMBTON  
Planning and Development Services, July 2021

[www.lambtononline.ca](http://www.lambtononline.ca)

#### Area Estimator



Notes: Area Estimator generalized blocks (shown at left) are scaled to represent typical area measures.  
Acre area measures can be converted to hectares (ha) by dividing by (2.471).



# Township of Warwick

## OFFICIAL PLAN

### APPENDIX 2

#### Mineral Aggregate Resources

to By-law No. 86 of 2021

Passed this 26 day of July, 2021

Jackie Rombouts, Mayor

Amanda Gubbels, CAO/Clerk

#### Appendix Amendments

