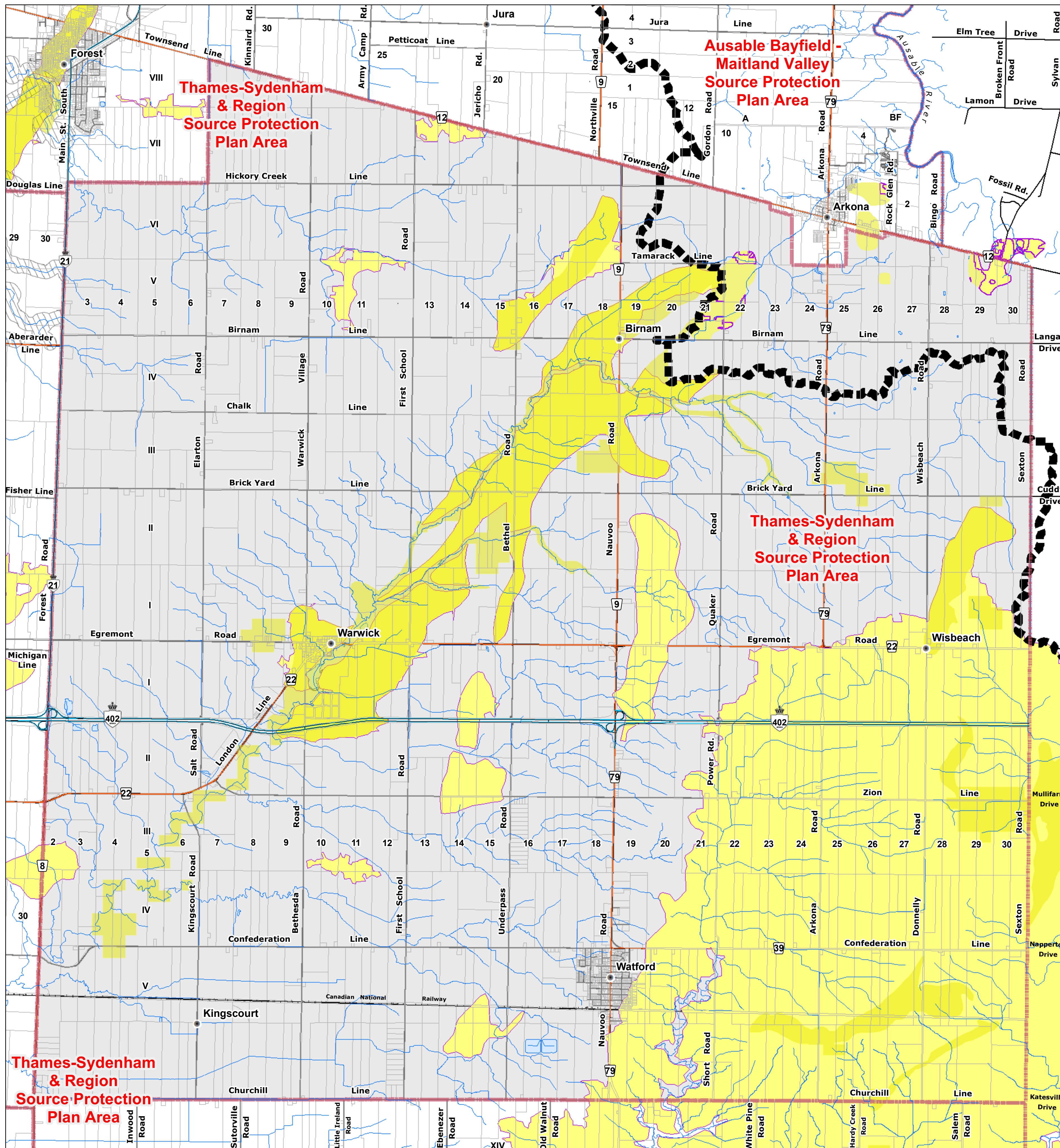


Township of Warwick

OFFICIAL PLAN

APPENDIX 3

Source Protection Plans



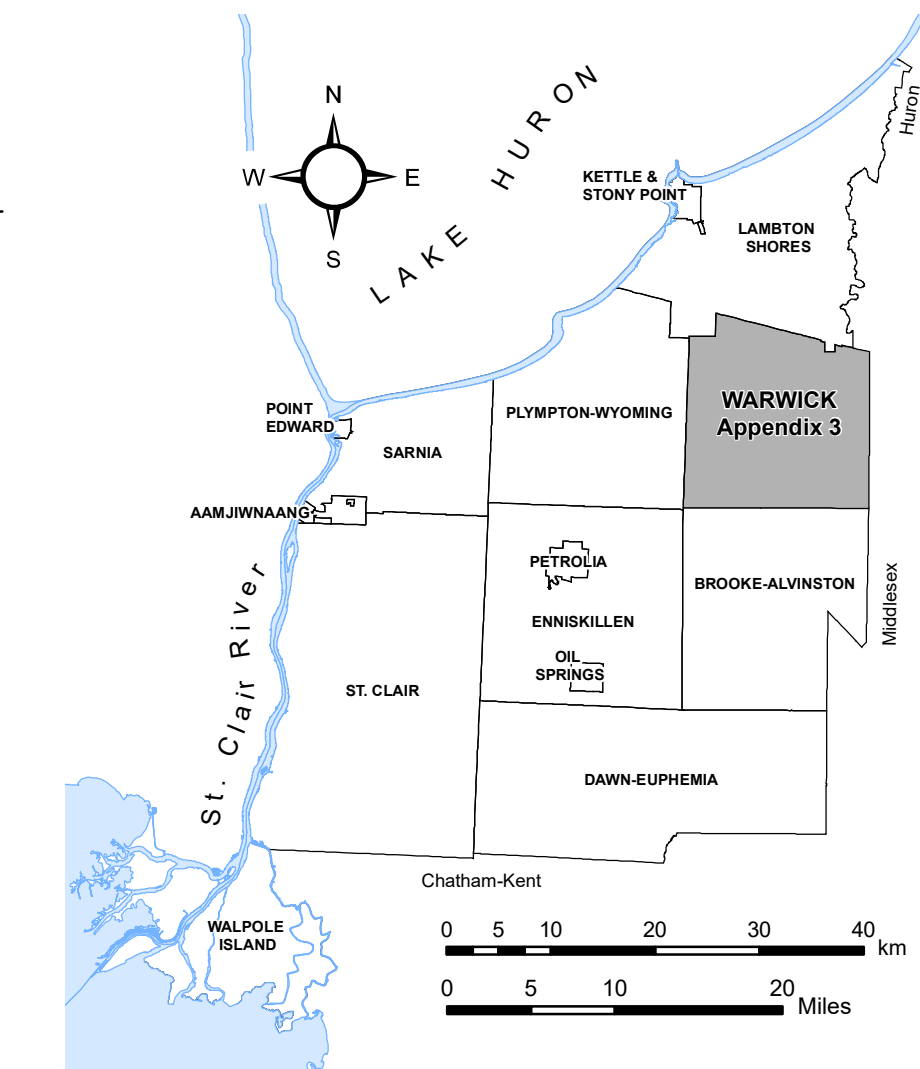
LEGEND

- Assessment Parcels
- Rivers - Streams - Drainage
- Roads
- Provincial Highway
- Railroad
- Waterbodies
- Township Boundary
- County Road

Thematic Legend

Areas of LOW to MODERATE Drinking Water Threat :

- HVA - (Highly Vulnerable Aquifers)
- SGRA - (Significant Groundwater Recharge Area)
- Source Protection Plan Boundary



Reference

Disclaimer: These digital mapping products have been produced on the County of Lambton's Geographic Information System. Data provided herein is derived from sources with varying levels of accuracy and currency. This is not a survey product. The County of Lambton disclaims all responsibility for the accuracy or completeness of information contained herein. The County of Lambton assumes no responsibility for errors arising from use of these digital mapping products.

NOTE: This Appendix does not form part of this Plan and is provided for information purposes only.

Cadastral database is current to December 2020.

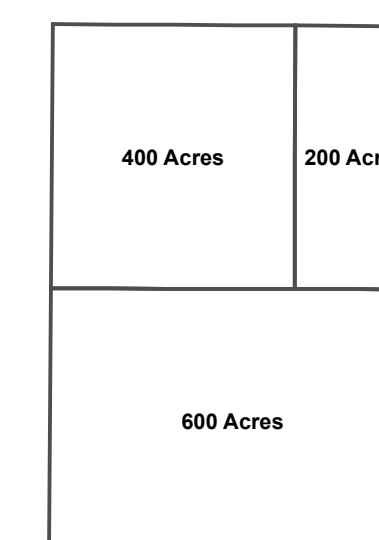
Projection: UTM NAD 83 Zone 17

Consultant : NPG Planning Solutions, July 2021

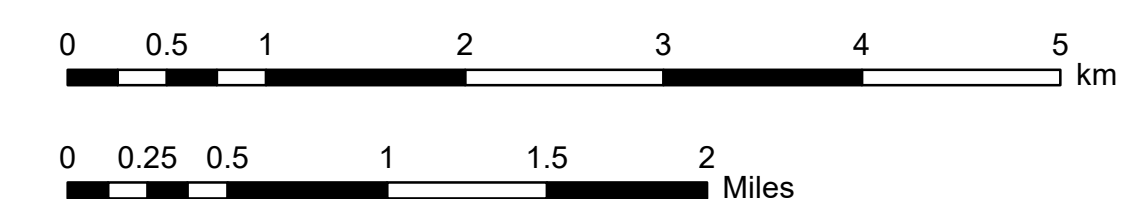
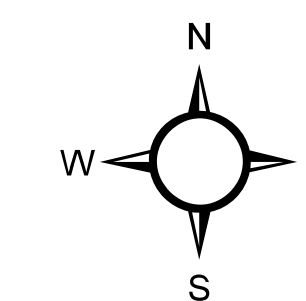
COUNTY OF LAMBTON
Planning and Development Services, July 2021

www.lambtononline.ca

Area Estimator



Notes: Area Estimator generalized blocks (shown at left) are scaled to represent typical area measures.
Acre area measures can be converted to hectares (ha) by dividing by (2.471).



Township of Warwick

OFFICIAL PLAN

APPENDIX 3

Source Protection Plans

to By-law No. 86 of 2021

Passed this 26 day of July, 2021

Jackie Rombouts, Mayor

Amanda Gubbels, CAO/Clerk

Appendix Amendments

