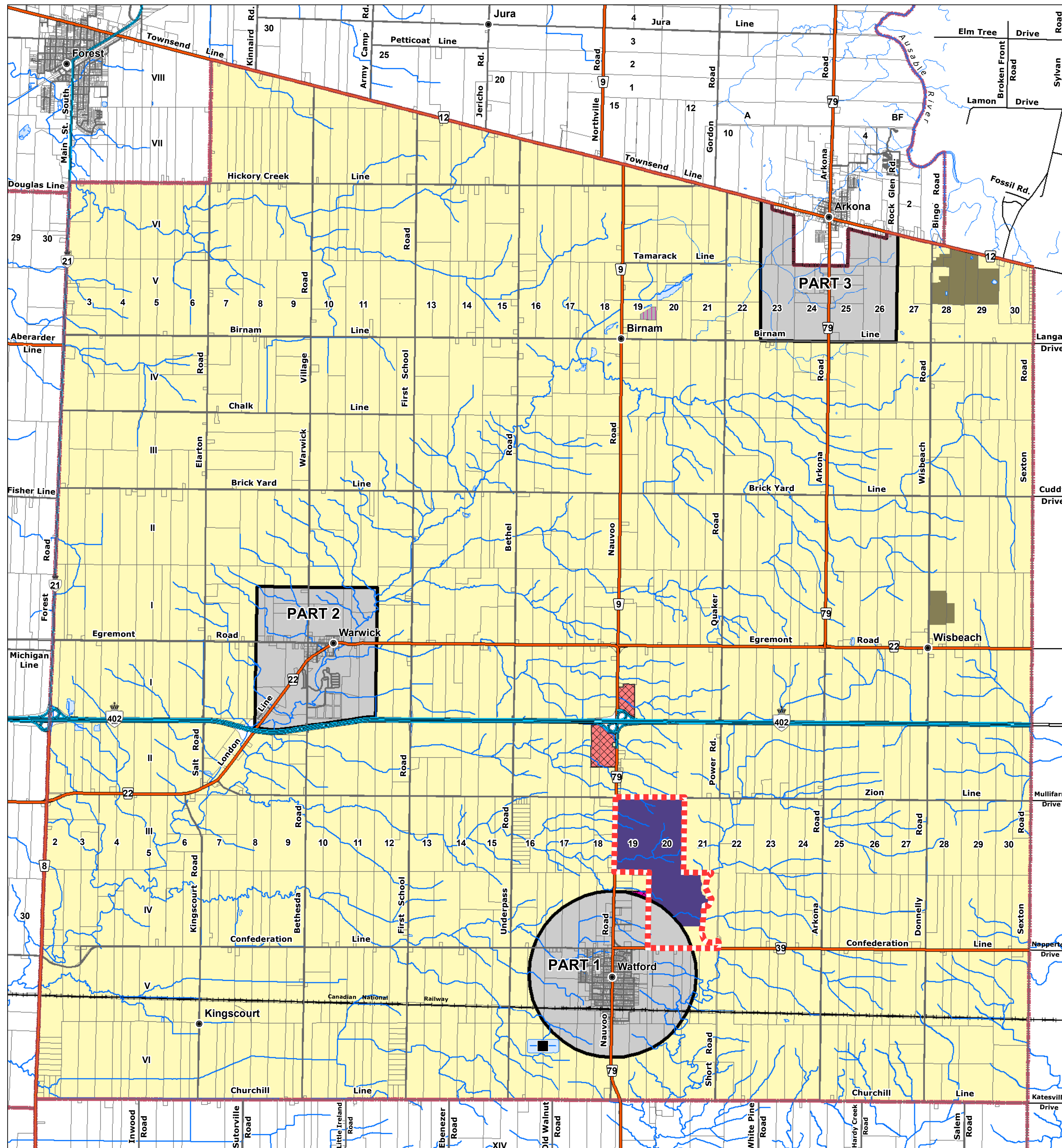


# Township of Warwick OFFICIAL PLAN SCHEDULE "A"



## LEGEND

- Assessment Parcels
- Rivers - Streams - Drainage
- Roads
- Highway 402
- Provincial Highway
- Railroad
- Waterbodies
- Sewage Treatment Works
- Township Boundary
- Schedule Inset Boundaries (Parts 1 to 3)

## Official Plan - Designations

- Agriculture
- Highway 402 Service Centre
- Mixed Commercial/Industrial
- Industrial
- Industrial Recycling
- Resource Extractive
- Landfill Site
- Waste Management Policy Area
- Employment Area
- Not Designated

## Reference

Disclaimer: These digital mapping products have been produced on the County of Lambton's Geographic Information System. Data provided herein is derived from sources with varying levels of accuracy and currency. This is not a survey product. The County of Lambton disclaims all responsibility for the accuracy or completeness of information contained herein. The County of Lambton assumes no responsibility for errors arising from use of these digital mapping products.

The Official Plan information contained herein is current as of the last recorded amendment noted under "Official Plan Amendments".

Cadastral database is current to December 2020.

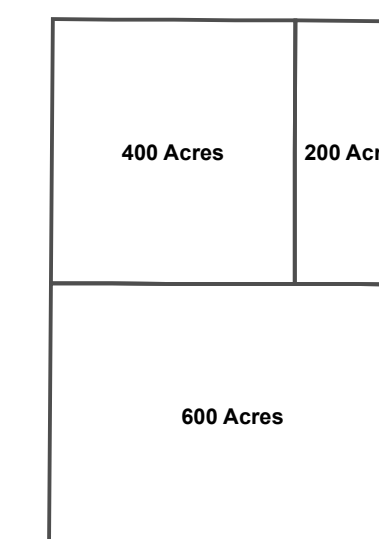
Projection: UTM NAD 83 Zone 17

Consultant : NPG Planning Solutions, July 2021

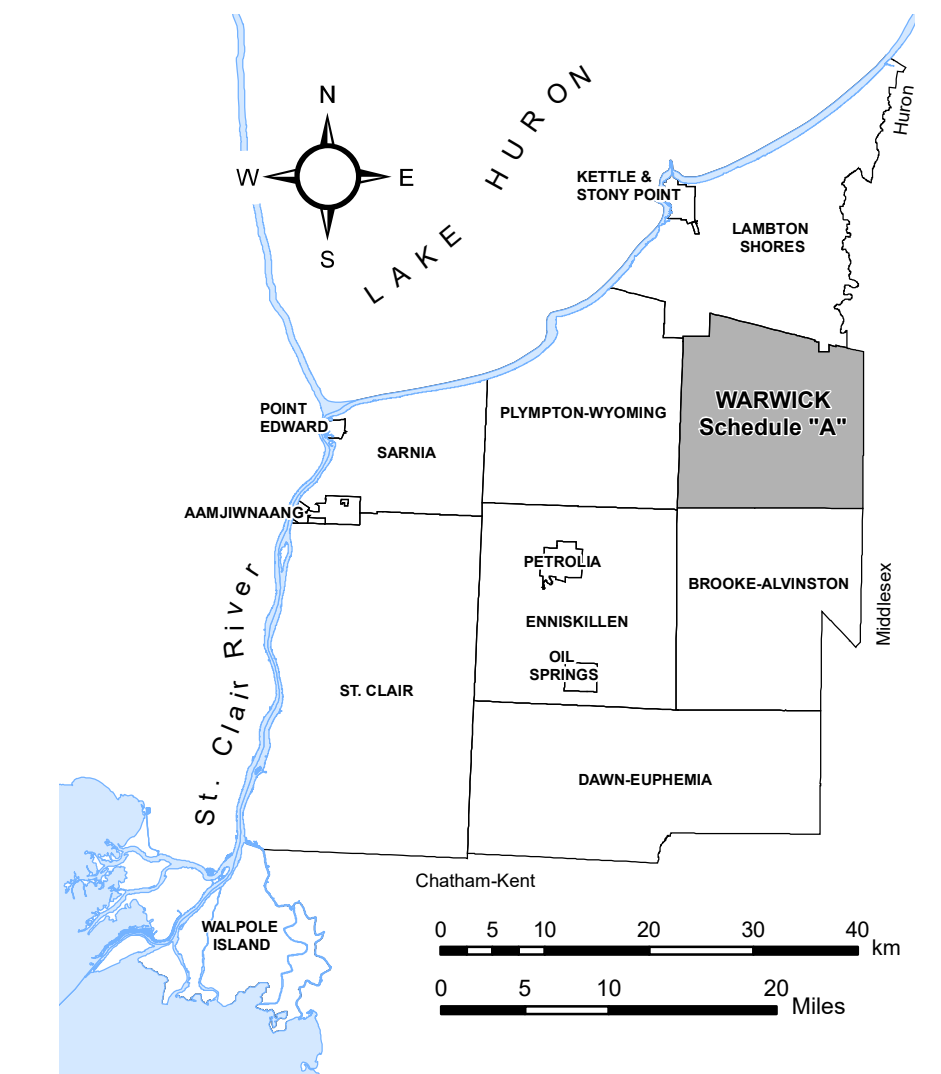
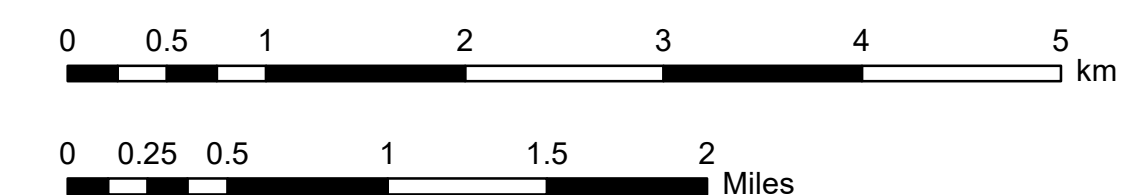
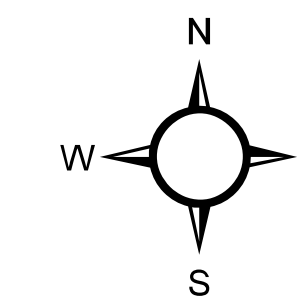
COUNTY OF LAMBTON  
Planning and Development Services, July 2021

[www.lambtononline.ca](http://www.lambtononline.ca)

### Area Estimator



Notes: Area Estimator generalized blocks (shown at left) are scaled to represent typical area measures.  
Acre area measures can be converted to hectares (ha) by dividing by (2.471).



## Township of Warwick OFFICIAL PLAN SCHEDULE "A"

to By-law No. 86 of 2021

Passed this 26 day of July, 2021

Jackie Rombouts, Mayor

Amanda Gubbels, CAO/Clerk

Official Plan Amendments

